

2018

Nov 5

Canadian Alliance
To End
Homelessness
Conference

Home
for Good
in Peel

Lessons and Successes in Housing First Collaborations:

The Home for Good in Peel Collaborative

Presented By: Cory O'Handley, Kelly Anne Salerno, and
Kathryn Gibb

Who are we?

**Cory
O'Handley**



**Kelly-Anne
Salerno**



**Kathryn
Gibb**





Giving Hope Today



Canadian Mental
Health Association
Peel Dufferin
Mental health for all

Association canadienne
pour la santé mentale
Peel Dufferin
La santé mentale pour tous



Home
for **Good**
in Peel

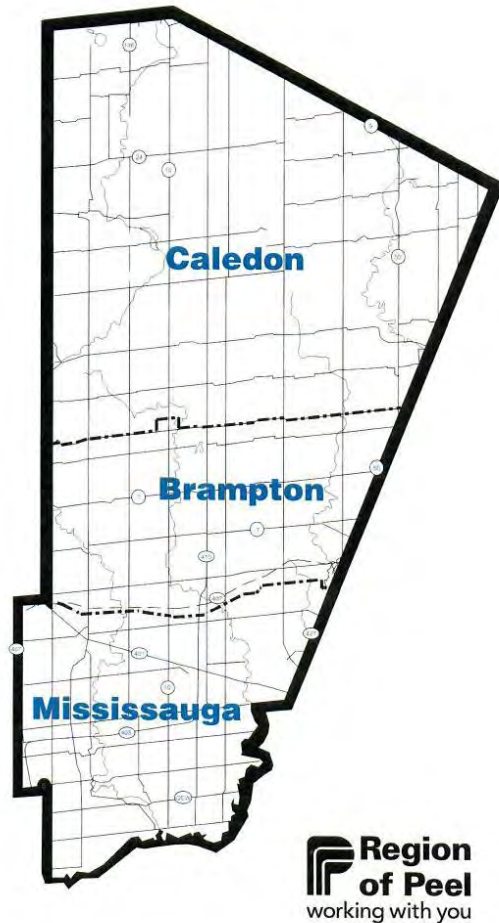
JohnHoward
SOCIETY OF PEEL-HALTON-DUFFERIN



Presentation Goals

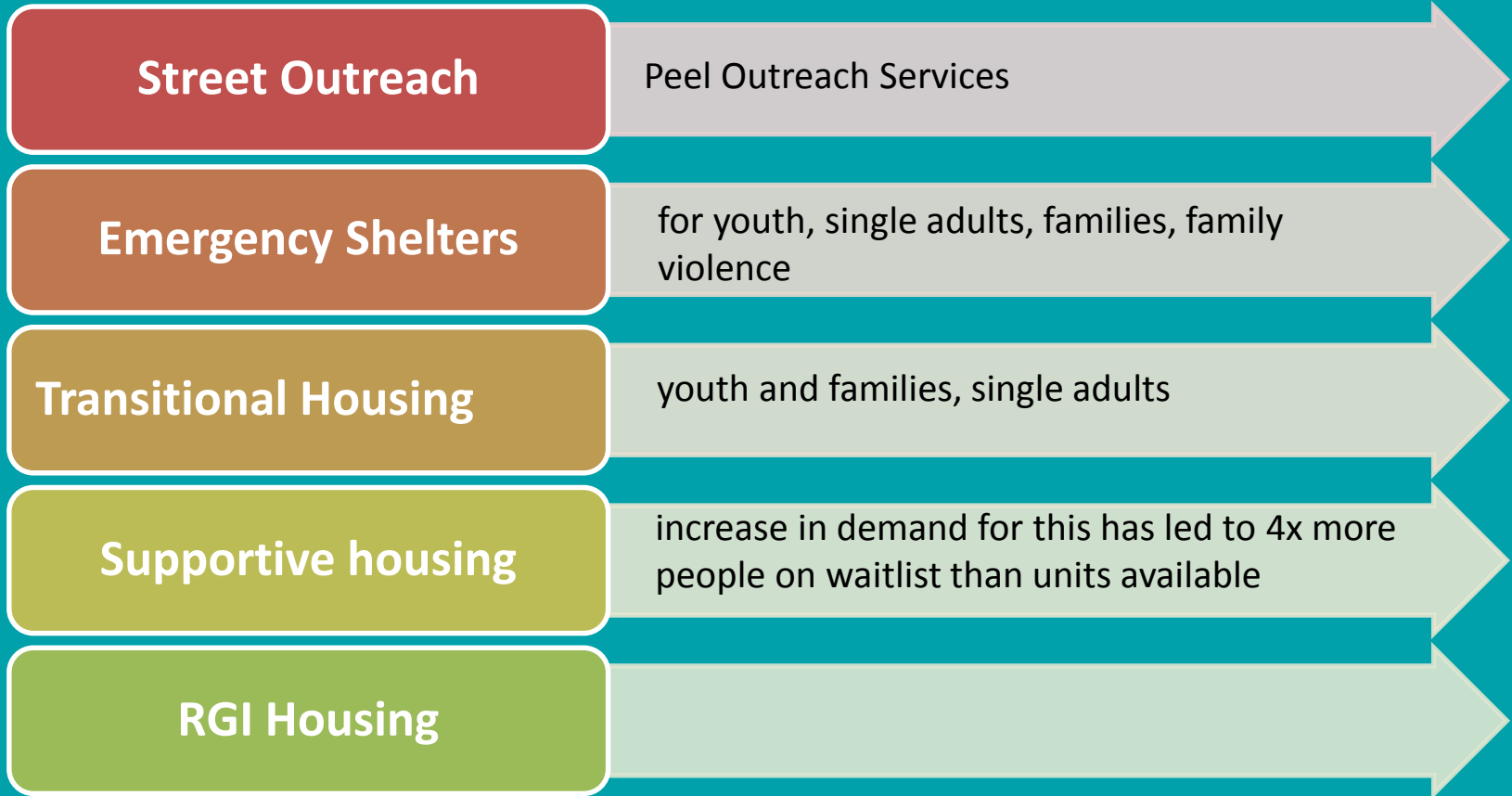
- Provide Context of Housing First in our community
- Review the stages of development- HF Collaborative
- Successes, challenges, learnings
- Next steps

Peel Region: our Community

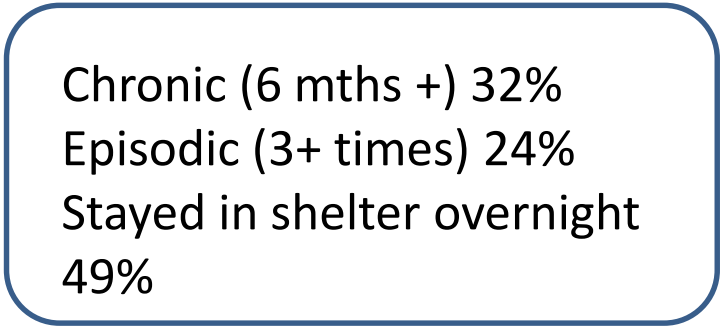
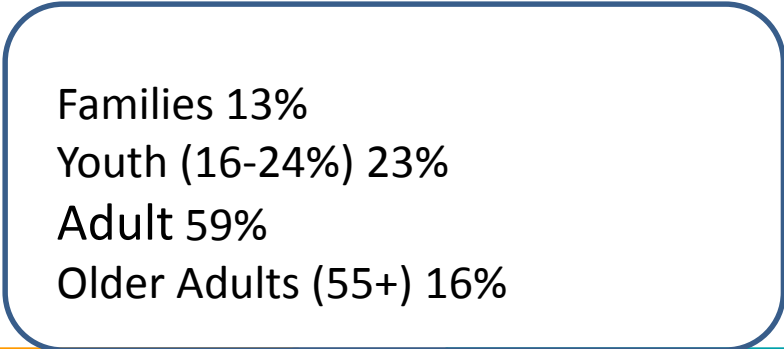
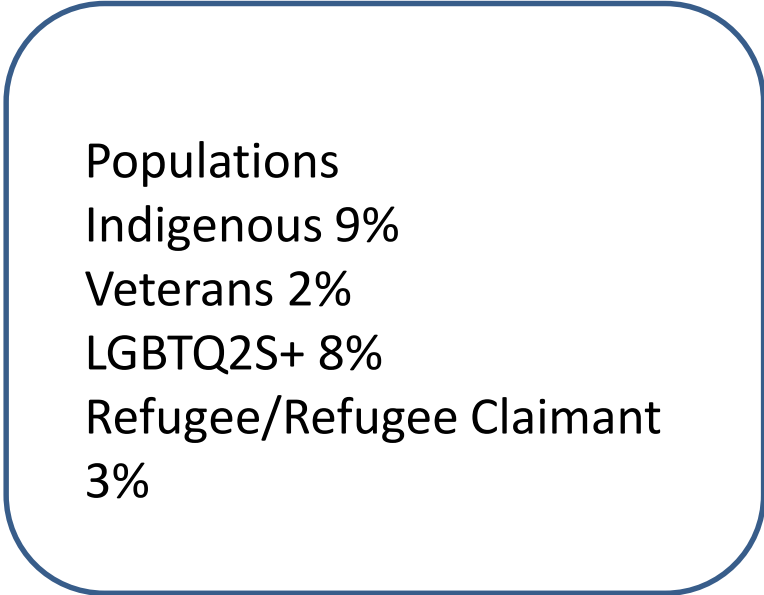
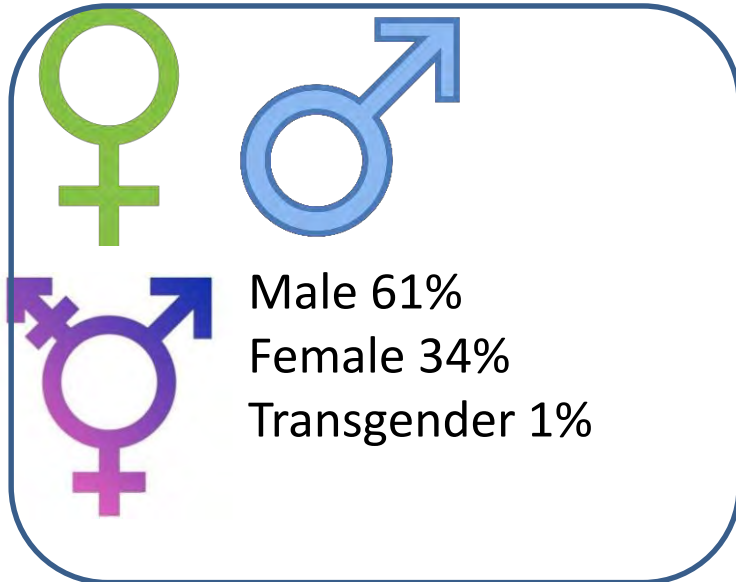


- Population approximately 1.4 million
- 5% of Canada's population
- 12% of Ontario's population

Housing & Homelessness Supports in Peel

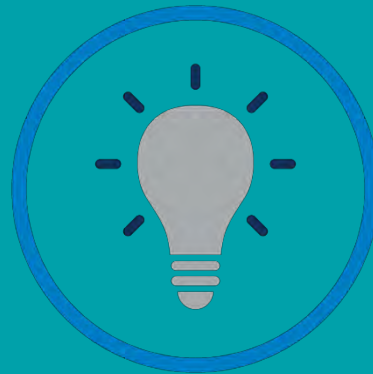


2018 Everyone Counts Peel Initiative



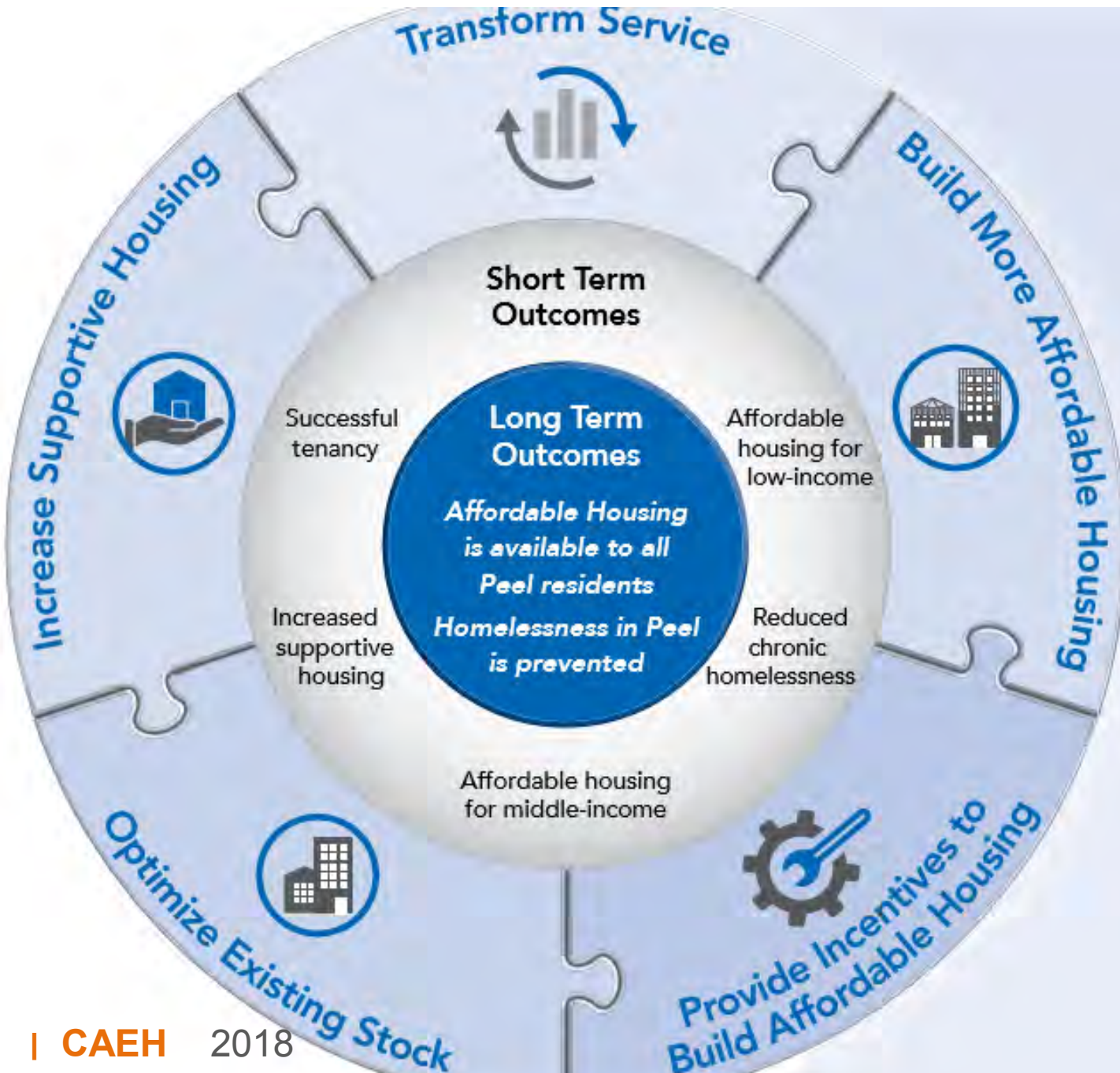
SYSTEM TRANSFORMATION

INNOVATION

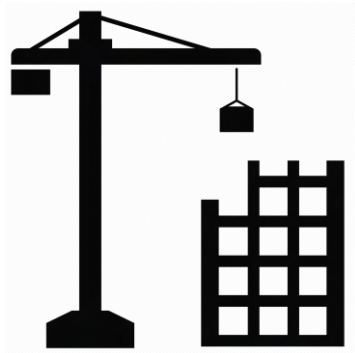


Peel Housing & Homelessness Plan 2018-2028

The PHHP sets the direction for the work of the Region of Peel and its partners over the next 10 years to make affordable housing available and to prevent homelessness for all Peel residents.



Strategies



Transform
Service

Build More
Affordable
Housing

Provide
Building
Incentives

Optimize
Existing
Stock

Increase
Supportive
Housing

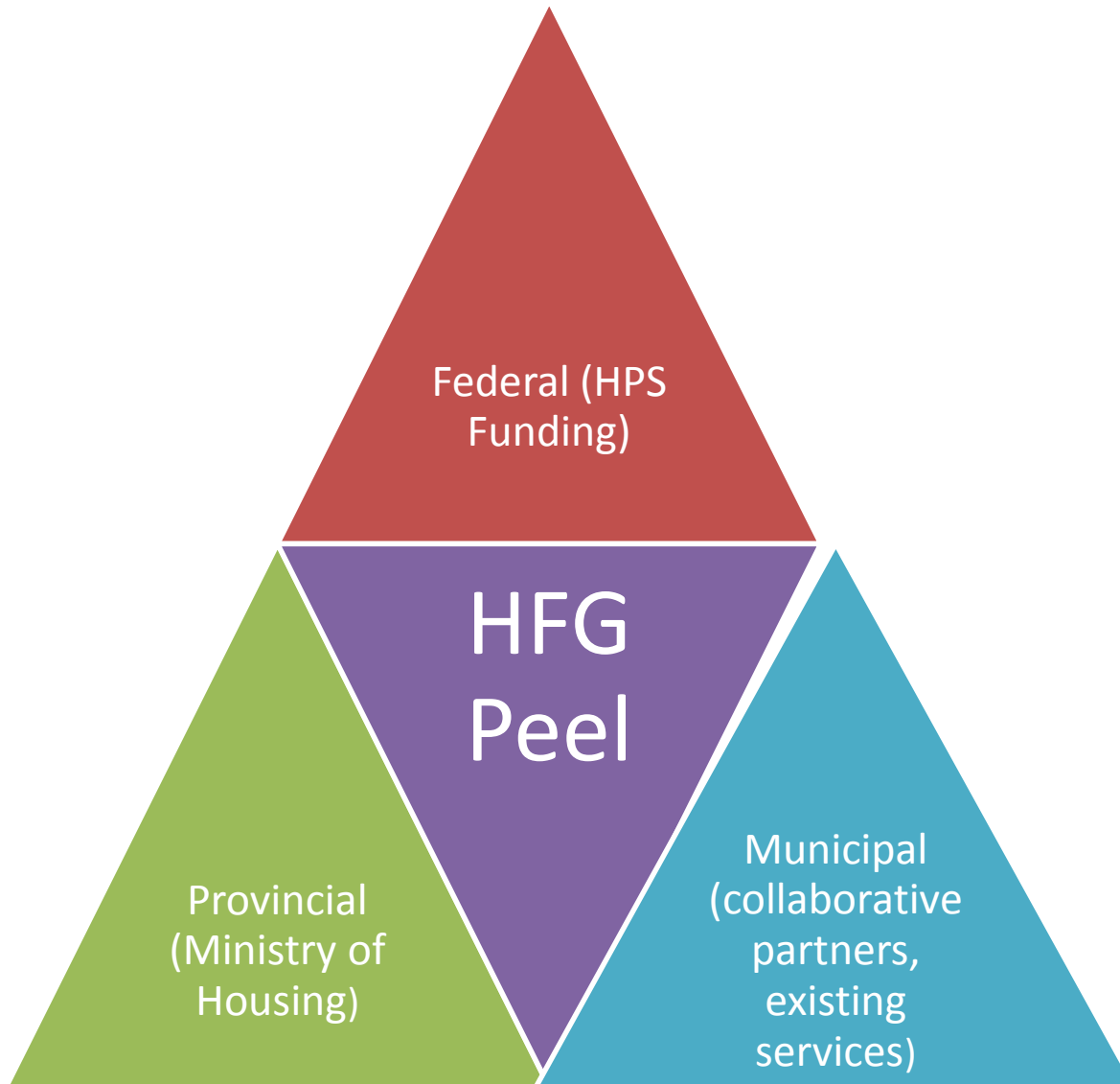
DEVELOPING PEEL'S HOME FOR GOOD MODEL

How we got here

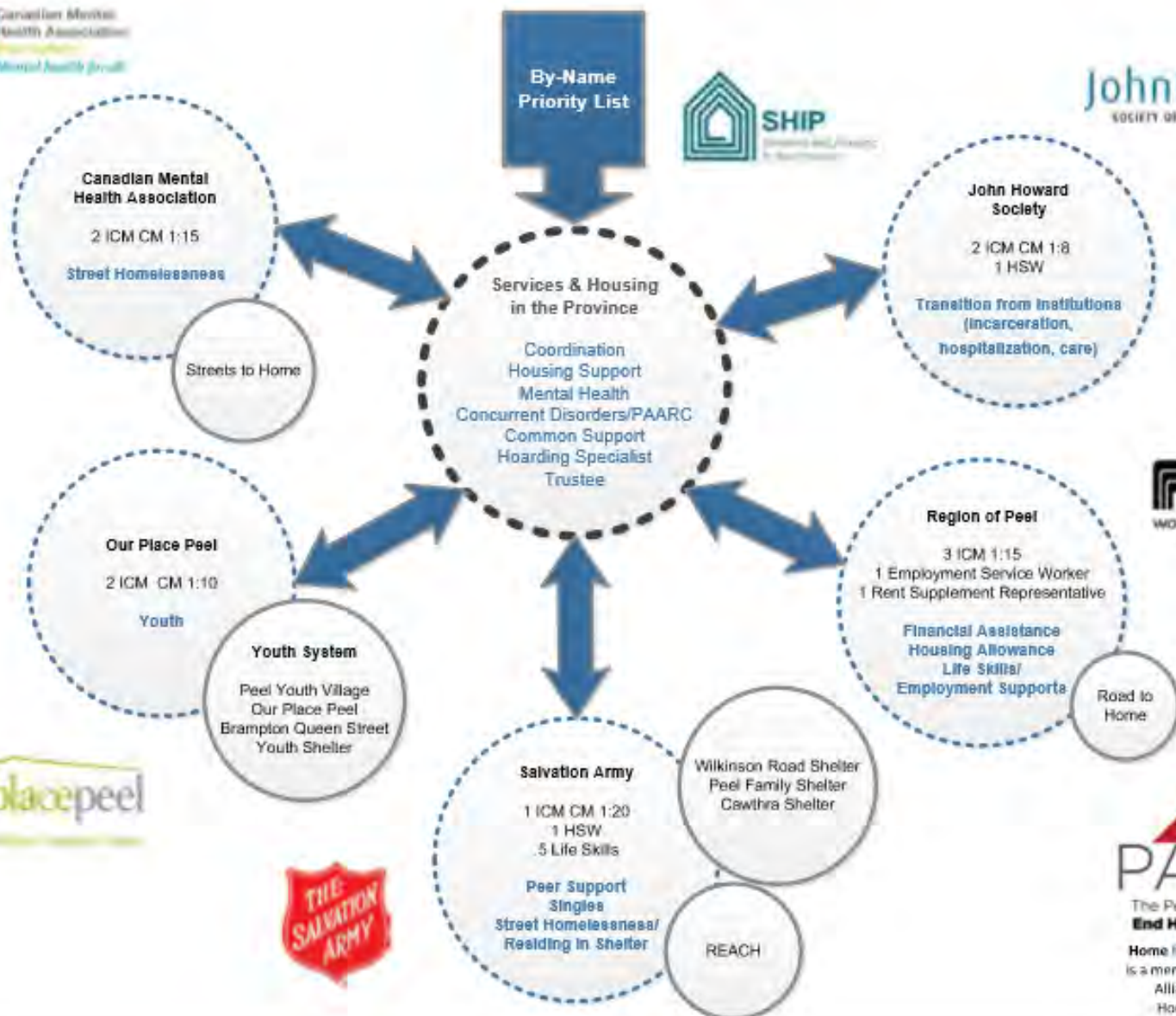
- Groundwork: existing collaborative work through Enumeration, 20k Homes, Peel Alliance to End Homelessness, Built for Zero, and other various partnerships between organizations
- Two existing HPS funded Housing First programs
- Home for Good Expression of Interest was announced
- A joint submission: Regional leaders looked to build on our collaborative orientation and pilot a coordinated service provision initiative

This combined proposal created a project of sufficient size and scope that it will more effectively meet the needs of people experiencing chronic homelessness through a more coordinated approach





Housing First: Home for Good in Peel Collaborative Model



Each member of our collaborative brings something to the table



Program Mission

Home for Good – Peel

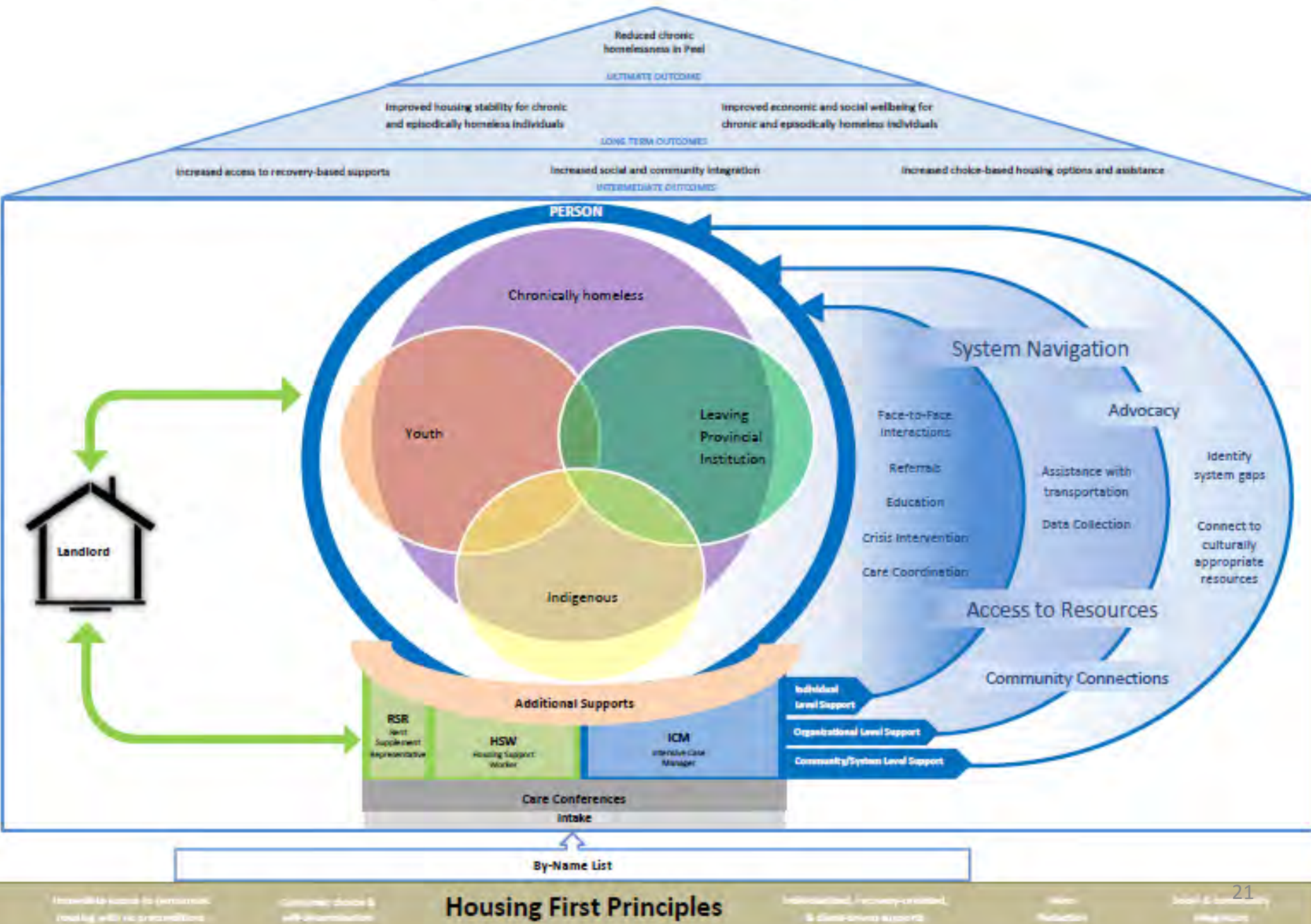


Home for Good – Peel

Dynamic Prioritization Matrix



Home for Good in Peel – Conceptual Model



Outcomes

- The top of the conceptual model, or “roof of the house” illustrates the intermediate, long-term and ultimate outcomes that HFG aims to achieve.
 - Increase access to recovery based supports
 - Increase social and community integration
 - Increase choice based housing options and assistance for persons who participate in the program

Participants are provided with...

Intensive Case Management

- **Intensive Case management (ICM)** is a collaborative process of assessment, planning, facilitation, care coordination, evaluation, and advocacy for options and services to meet an individual's comprehensive needs in order to achieve greater life stability.
- The goal of ICM is to empower people, draw on their own strengths and capabilities, and promote an improved quality of life by facilitating timely access to the necessary supports and thus reduce the risk of homelessness and/or help people achieve housing success.

Participants are provided with...

Intensive Case Management

- **Intensive Case management (ICM)** partners with other specialized services:
 - Landlord Engagement Specialists
 - Community Mental Health Counselling/Hoarding Specialist
 - Addictions assessment and referral to treatment
 - Employment programming, placements
 - Financial Support/Trusteeship
 - Peer Support Workers
 - Life Skills/Group workshops

All the resources of the partner agencies can be coordinated to benefit the program participants in their care plan. Weekly case conferencing supports the direct service team.

Case Management Standards

- We developed mutual case management standards and processes for delivery of service
- We committed to using the same suite of OrgCode tools and following the same structure for use
 - SPDAT
 - Quality of Life measure
 - Honest Budget

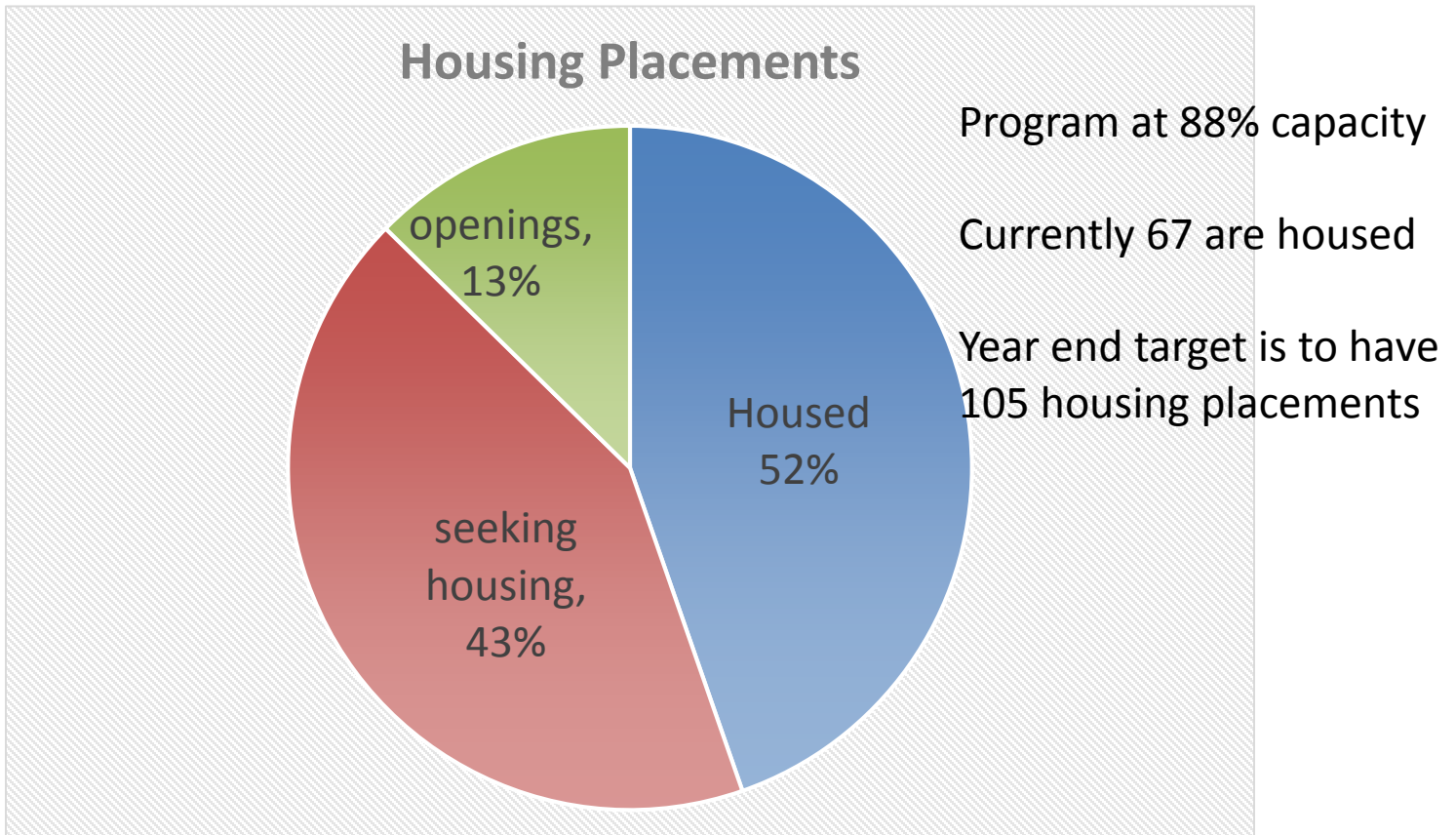
Data and Evaluation

- We will be evaluating our collaborative approach, which is distinct from other stand alone HF initiatives
- We will be completing HF Fidelity assessment early in 2019
- Data sharing between the service partners requires both commitment and coordination. Our strong partnership orientation is crucial
- The Region of Peel is building shared case management and reporting tools into our new housing technology to facilitate data sharing

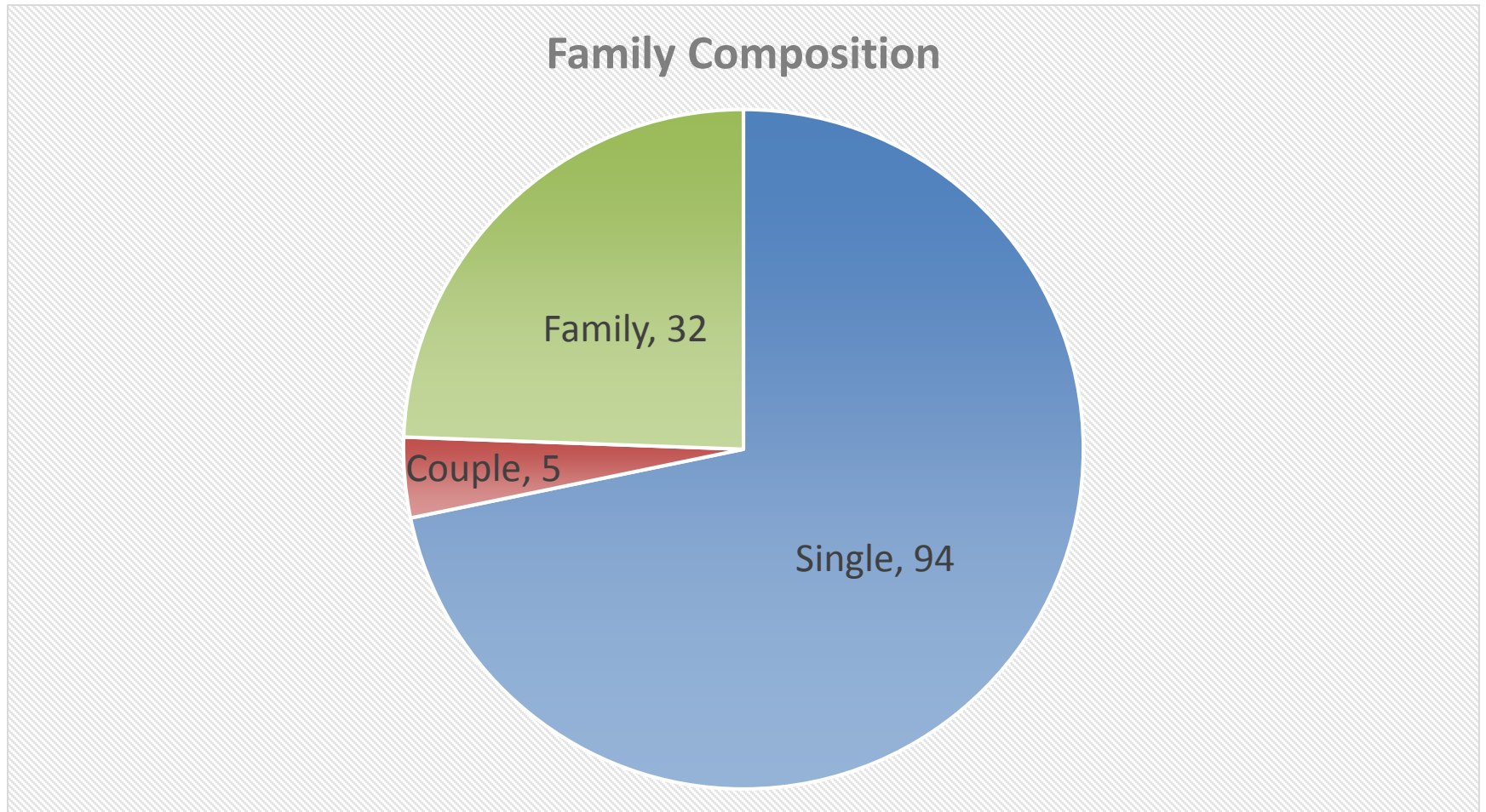
Learning Orientation

- Agile project management
- PDSA cycles
- Meeting regularly as a leadership team for effective decision making
- Not being adverse to change as we progress
- Investing in our staff teams with collaborative training

Housing Placement Status



Caseload Composition



Challenges

- We have planned our program while implementing our program, and learned as we grew
- Our first participants: we had an influx of intakes, and influx of housing placement needs and case management plans. Our staff have demonstrated their commitment through this process
- We have been brainstorming on how to work around the challenge of low housing stock and are planning PDSAs on new housing ideas
- The partnership of community social service agencies and the municipality

Successes

- We have planned our program while implementing our program, and learned as we grew
- The partnership of community social service agencies and the municipality



Future State

- We are looking at expanding our choice based housing options such as shared accommodation, mobile homes
- We have increased our rent supplement for families to open up more housing options
- We are developing partnerships with other service providers to further our collaborative approach
- We are building interventions for those at critical risk, such as human trafficking and palliative health status. This means partnership with the health sector and other service collaboratives

Recommendations on Collaboration

- Maintain flexibility and fluidity in approach
- An organic approach that can be modified to meet client needs
- Seek diverse and non-traditional partners

Testimonials

- “Home for Good helped me improve my living situation and overall health and quality of life in a way that I could not have done on my own.”

Testimonials

“I am confident that they will continue to help me improve going forward, and I am very grateful for everything the Home for Good program and it’s team have already given me.”

Testimonials

REACH has helped me with everything from housing to mental health issues, financing, and addiction issues. Put it this way- they offer you purpose, perspective, participation, and progress.”

CASE STUDY: NIC

Thank You! Questions?

**Cory
O'Handley**



**Kelly-Anne
Salerno**



**Kathryn
Gibb**



Cory.ohandley@shipshey.ca
905-795-8742 ext.

Kellyanne.Salerno@peelregion.ca
905-793-9200 ext. 8603

Kathryn.gibb@shipshey.ca
416-505-4482